



Unit 1 Oldington Lane, Firs industrial Estate, Kidderminster, DY11 7QN
www.omegasteelbuildingsolutions.co.uk
Tel 01562 824171 Fax 01562 827261

Steel Building Quotation
Gloucestershire - 8m x 15m
Town Location

Date 11 April 2011

Quotation Reference 0104-0585-Glous T 8x15

Customer Ref Glous T 8x15

Dear Sirs

steel
frames
direct

We thank you for your valued enquiry, based on the information provided Omega Steel Building Solutions are pleased to offer our quotation which we trust is in line with your requirements. Please feel free to contact our sales team to discuss any additional requirement or changes in any of the detail listed in our quotation below.

Omega Steel Building Solutions utilise latest advancements in material and profiles available, sections are manufactured from Z45 high tensile pre-galvanised high yield cold rolled steel, resulting in high strength, economical frames. Most component manufacturing processes are fully automated utilising CAM file input. The portal frames secondary cladding support systems are a bolt together construction, section are connected by a load bearing laser cut bracket, all holes in the component parts are produced from the CAM files to ensure accuracy and alignment.

On receipt of order Omega Steel Building Solutions will supply as part of the package a detailed general arrangement drawing, slab specification, elevation drawings and a standard building calculation sheets to issue to your local authority building control department. We have found our standard set of documentation acceptable to most local authorities in obtaining planning permission, however If further calculations are required, it may incur additional charges depending on building control requirements.

Based on the information entered

Overall sizes the Pre galvanised Omega Steel Building Solutions building kit will produce:

| | |
|---------------------|---|
| Wind Speed | 21 m/s |
| Site Altitude | 12 m |
| Distance from Coast | 45 km |
| Building Location | town |
| Height to eaves | 3.000 m |
| Gable Width | 8.000 m |
| Length | 15.000 m |
| Roof Pitch | 12 degrees |
| Building Style | Ridge |
| Column Centres | 3.636 m |
| Number of Bays | 4 |
| Cladding type | Single Skin Polyester 0.7mm Roof panels 0.5mm Wall Panels |

| | |
|-------------------|--|
| Roller Doors | 1 x Industrial Roller Door 3m wide by 2.5m high; |
| PA Door | 1 |
| Rain water system | none |

Colours Chosen

| | |
|------------------|-------------------------|
| Flashings/Trim | Ocean Blue / Ocean Blue |
| Roofing Cladding | Goosewing Grey |
| Wall Cladding | Goosewing Grey |

Components covered:

Flashings/ Trims
(Corner, Drip, Eaves, Ridge and Barge)
Fixings for frame, cladding and base cleats
Clear Roof Lights (min 10% of Roof area)
Bracing
Fillers

The building kit design conforms to BS5950 Part 5, and wind Calculations BS6399 part 2

Building Kit price based on the above:

| | |
|--------------|---|
| Building Kit | £ 8,688.50 + VAT Ex works |
| Lead Time | 3 – 4 Working weeks from receipt of final building size approval and account clearance. |
| Valid | 30 days |
| Terms | 25% deposit with order, remaining 75% prior to shipping. Inspection of building at our Kidderminster collation point prior to final payment is an option if required. |

steel
times
direct

All Prices are subject to availability, Omega Steel Building Solutions terms and conditions of sales apply at all times. Our quotation is based on our interpretation of your requirements, any deviations will be costed on a pro rata bases.

Our quotation is for the supply only of materials to produce a building to the above criteria.

For guidance, assuming site access and boundaries aren't an issue we would anticipate a labour cost budget of £4,595.00 would be applicable for erection of a building based on the above sizes on a pre-prepared base. This budget cost does not include the hire of plant or equipment specific to your site this can be discussed and quoted as an additional cost by our experienced sub contract installers.

Whilst many of our end user customers choose to project manage and even erect their building Omega Steel Building Solutions have trade partners throughout the UK who are familiar with our products, our trade partners are able to handle any element of the processes required to deliver your project to the highest standard. Health and safety is a top priority to our partners and Omega Steel Building Solutions, the experienced teams will be able to guide you through the processes and work to applicable regulations. This aspect should be of high priority to you if the building is to be installed on an existing commercial site. You are responsible to ensure everybody on your site is safe, even sub contractors. Contact a member of the Omega Steel Buildings Team and we advise you of trade partners in your area, or trade partners who have expertise in your building type usage.

Once again we thank you for your interest in our product and hope you can see its advantages, both in price and availability. The team at Omega Steel Building Solutions hope we can be of assistance in the future.

Kind Regards

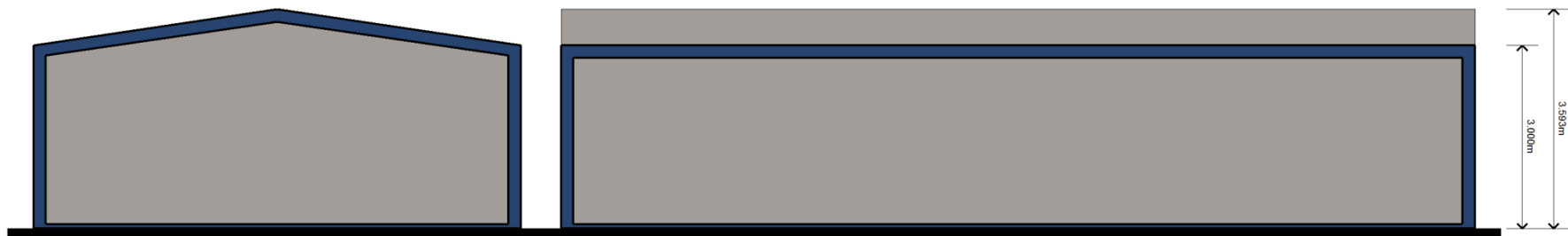
Omega Steel Buildings Team

frames
direct



Gable 1

Elevation 1



8.000m

Gable 2

15.000m

Elevation 2