



Unit 1 Oldington Lane, Firs industrial Estate, Kidderminster, DY11 7QN  
www.omegasteelbuildingsolutions.co.uk  
Tel 01562 824171 Fax 01562 827261

**Steel Building - Herefordshire**

6m x 12m

Date 24 March 2011

Quotation Reference 2203-0231-Herefordshire 6x12

Customer Ref Herefordshire 6x12

Dear Sirs

Thank you for your valued enquiry and at Omega Steel Building Solutions we hope we have provided our quotation in line with your expectation and requirements. Should this not be the case please feel free to contact our sales team to discuss.

Omega Steel Building Solutions building frames are produced from pre-galvanised high yield cold rolled material, resulting in high strength light weight frames. Most component manufacturing processes are fully automated utilising CAM file input. All components parts have been designed to simplify handling to reduce erection time thus reducing costs. The cold rolled materials used in our building solutions are one of the most successful recent advancement in Steel Construction. Use of cold rolled sections in the construction industry is increasing due to its accuracy and speed of manufacture, strength to weight ratios, ease of handling and carbon footprint reduction.

Our Cladding option solution:

Single Skin wall panels are 0.55mm Plastisol and roof panels are 0.7 plastisol. Roof panels are supplied with Anti Condensation lining. This method of cladding can be used if no permanent heating system is to be used. Great option for additional Storage buildings, Home Workshops or garages.

steel  
frames  
direct

The Double Skin built up and composite solutions are designed to meet the building regulations, specifically important to part L. The cost of materials on the Double Skin built up system would give a saving of approximately 30% when compared to Composite panels, however the installation costs of double Skin built up system is greater, reducing the cost difference. Either of these methods of envelope construction must be used if heating systems are to be installed in your building.

The overall size the Pre galvanised Omega Steel Building Solutions building kit will produce:

Wind Speed	22 m/s
Site Altitude	58 m
Distance from Coast	53 km
Building Location	town
Height to eaves	3.000 m
Gable Width	6.000 m
Length	12.000 m
Roof Pitch	12 degrees
Building Style	Ridge
Column Centres	3.847 m
Number of Bays	3
Cladding type	Single Skin Polyester 0.7mm Roof panels 0.5mm Wall Panels
Roller Doors	1 x Industrial Roller Door 3m wide by 2.5m high;
PA Door	1
Rain water system	none
Colours Chosen	
Flashings/Trim	Ocean Blue / Ocean Blue
Roofing Cladding	Goosewing Grey
Wall Cladding	Goosewing Grey

Components covered:

Flashings/ Trims  
 (Corner, Drip, Eaves, Ridge and Barge)  
 Fixings for frame, cladding and base cleats  
 Clear Roof Lights (min 10% of Roof area)  
 Bracing  
 Fillers

The building kit design conforms to BS5950 Part 5, and wind Calculations BS6399 part 2

Building Kit price based on the above:

Building Kit	£ 7,748.45 + VAT Ex works
Lead Time	3 – 4 Working weeks from receipt of final building size approval and account clearance.
Valid	30 days

Terms

25% deposit with order, remaining 75% prior to shipping. Inspection of building at our Kidderminster collation point prior to final payment is an option if required.

All Prices are subject to availability, Omega Steel Building Solutions terms and conditions of sales apply at all times. Our price is based on our interpretations, and any deviations will be charged on a pro rata bases.

Recommendations:

Our offer is to supply materials to produce a building to the above criteria. Although many of our customers self erect our buildings, Omega Steel Building Solutions have teams of sub contract site engineers to erect your building using the correct tools and erection methods to deliver the best completed project possible. Health and safety is a top priority to Omega Steel Building Solutions, and the experienced teams will be able to guide you through the processes and work to applicable regulations. This aspect should be of high priority to you if the building is to be installed on an existing commercial site. You are responsible to ensure everybody on your site is safe, even sub contractors.

For guidance, assuming site access and boundaries aren't an issue we would anticipate a labour cost budget of £3,495.00 would be applicable for erection of a building based on the above sizes. This budget cost does not include the hire of plant or equipment specific to your site this can be discussed and quoted as an additional cost by our experienced sub contract installers. Contact our sales team for suitable engineers within your area.

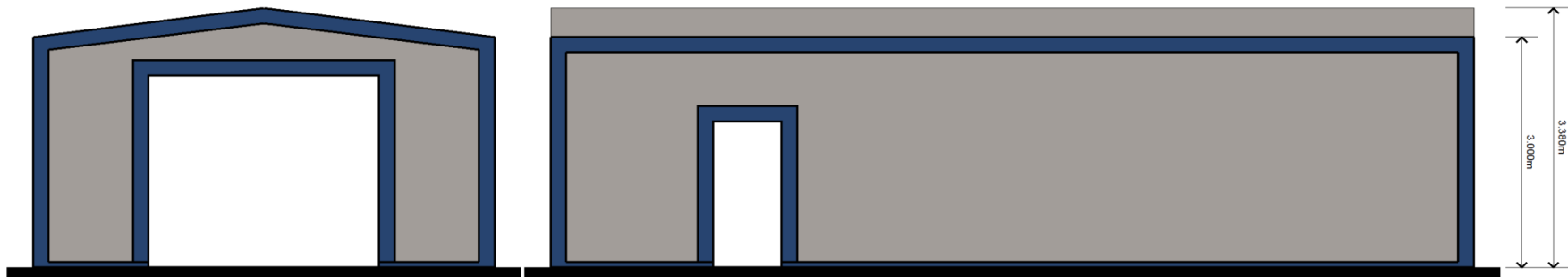
Omega Steel Building Solutions will supply a detailed general arrangement erection drawing, slab specification and elevation drawings to issue with planning. We will also provide a standard calculation sheet to be issued to building control. If further calculations are required, additional cost may be incurred depending on building control requirement.

A site plan and layout will be required for planning, if you do not already have an architect working with you. Omega Steel Building Solutions can put you in touch with Architects familiar with our product, capable and whose rates are competitive. We also have experience consultants that can work with you from conception to completion. If this additional service is of interest, please contact our sales team.

Once again we thank you for your interest in our product and hope you can see its advantages, both in price and availability. The team at Omega Steel Building Solutions hope we can be of assistance in the future.

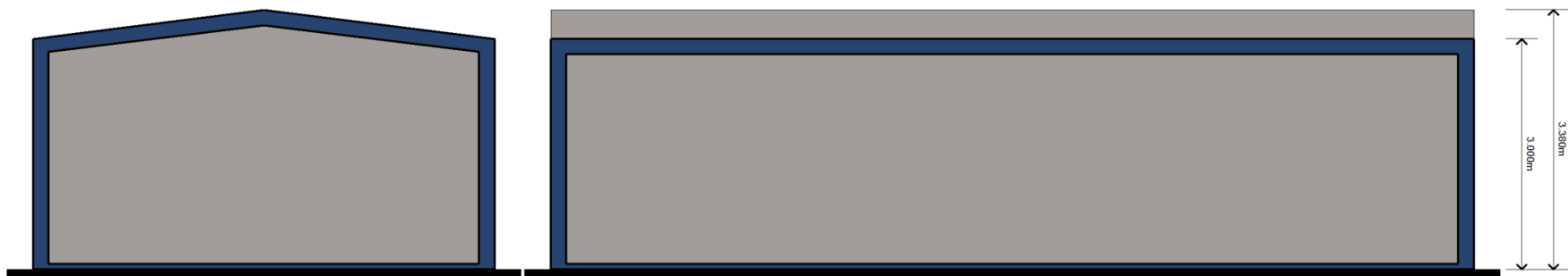
Kind Regards

Omega Steel Buildings Team



Gable 1

Elevation 1



Gable 2

Elevation 2

6.000m

12.000m