

Flashpipe

APPLICATIONS

Suitable for any sheet material – steel, aluminium, copper, lead, asbestos free cement, plastic, fibreglass or timber. Dektite conforms quickly and easily to all known sheet profiles. Dektite silicone is recommended for flashings where a greater range of temperatures are likely, i.e. steam pipes, heater flue pipes.

BENEFITS

Is simply installed despite obstructions or multiple pipe penetrations. Equally effective on side walls as on roofs. Is adaptable to oval or square sections, accommodating ducts, cables etc.

SPECIFICATIONS

Manufactured from EPDM (Ethylene Propylene Diene Monomer), specifically compounded to give exceptional resistance to ozone, ultra violet light, and water. Will effectively seal and remain pliant over a wide range of temperatures; from -30° to 150°. Proven to withstand intermittent temperatures up to 175°c.

Dektite Silicone
Manufactured from silicone rubber, will effectively withstand temperature from -60° to 200°c. Proven to withstand intermittent temperatures up to 250°c.



ROUND BASE RANGE for standard application

EPDM Grey Dektite -30°c to 115°c

Code No.	Pipe dia range flat or profiled sheet up to 40mm depth	Pipe dia range on profiled sheet deeper than 40mm depth	BASE dia
DF100	0-35	N/A	92
DF101	5-65	5-55	120
DF102	50-75	50-65	160
DF103	5-120	5-110	195
DF104	75-160	75-135	235
DF105	115-195	115-170	275
DF106	125-230	125-195	325
DF107	150-275	150-225	370
DF108	175-325	175-270	420
DF109	250-480	250-420	650

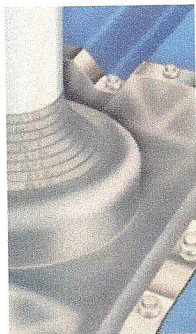
Silicone Red Dektite 60°c to 200°c

DF203	5-120	5-110	195
DF204	75-160	75-135	235
DF205	115-195	115-170	275
DF206	125-230	125-195	325
DF207	150-275	150-225	370
DF208	175-325	175-270	420
DF209	250-480	250-420	650

SOAKER RANGE eliminates effect between ribs on roof

EPDM Grey Dektite up to 20°c, 40mm deep corrugations

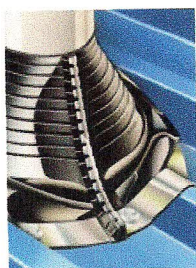
DF602	75-155	410x360
DF603	114-254	485x460
DF605	254-410	708x635
DF606	410-610	1415x905



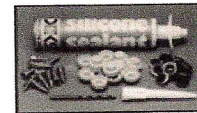
RETROFIT RANGE for repairing failed flashing or use as original flashing in awkward applications

EPDM Grey Dektite 30°c to 115°c

RF801	20-70	20-60	160
RF802	50-190	50-160	275
RF803	85-255	85-215	370



Simple fitting procedure



Fixings

A standard fixing fit is available containing drill bit, washers, self tapping screws, silicone sealant and weather caps.



Cut

Cut a neat hole in roofing sheet with minimum clearance for pipe and insert pipe through hole. Cut pliable Dektite sleeve where indicated on the sleeve for the relevant pipe sizes.



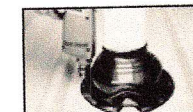
Slide and Apply

Slide Dektite flashing down over pipe. Apply a neutral cure silicone sealant on underside of flange.



Press

Press pipe flashing into contours of roof panel. A blunt tool can be used to press the flashing into place over any sharp angles.



Fasten

Drill and fasten flashing to surface with self tapping screws or rivets. Use a blunt tool to press base into sharp corners while drilling, inserting rivets or screws.